

**TECHNICAL SPECIFICATIONS**

Material	Powder-coated aluminum
Thickness	12/10 mm
Coating	25-micron polyester lacquer, both sides
Resistance	High resistance to corrosion
Fastening	ALU-CLICK® system, no silicone or visible fasteners
Seals	Watertight bituminous seals
Bracket width	70 mm
Gap between pieces	4 mm (summer) · 8 mm (winter)
Profile width	70 mm to 600 mm (made to measure)
Standard length	3 meters per piece
Standard colors	RAL 7016 · RAL 9006 · RAL 9003 · RAL 7022
Certification	ISO 9001:2015

**INSTALLATION**

- 1 Align the ALU-CLICK® system brackets on the wall
- 2 Fasten each bracket to the wall
- 3 Fit the profile by rotating it from the outside inward until it clicks into place
- 4 Leave a 4 mm gap in summer · 8 mm in winter between pieces for expansion

*The gap between pieces must be respected to ensure the aluminum expands correctly.*

**DIMENSIONS**



**Width:** 70 mm to 600 mm, made to measure  
**Side overhang:** 25 mm per side  
**Drop:** 45 mm per side  
**Standard length:** 3 meters per piece

**COLORS AND FINISHES**



**Anthracite**  
RAL 7016



**Natural**  
RAL 9006

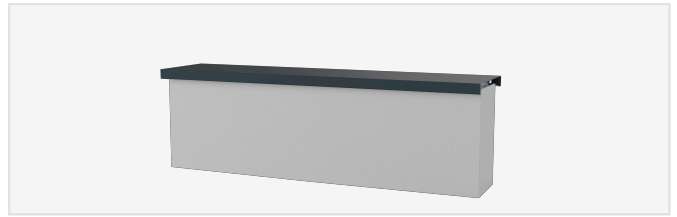


**White**  
RAL 9003



**Dark Gray**  
RAL 7022

**COMPONENTS**



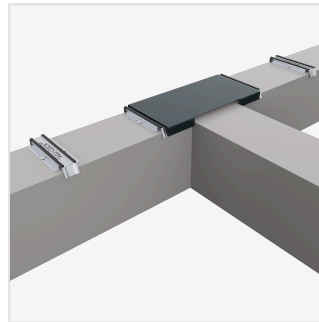
**Aluminum Profile & ALU-CLICK® Bracket**  
3 m lacquered profile + grooved bracket with integrated bituminous seal



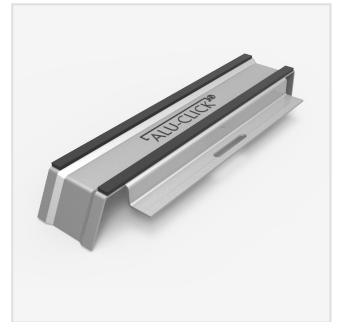
**90° Outer/Inner Corner**  
Special piece for wall corners



**End Cap**  
Cap to finish the end of the run



**T-Joint Wall Coping**  
Special piece for T-shaped wall junctions



**ALU-CLICK® Bracket**  
Grooved bracket with bituminous seal

